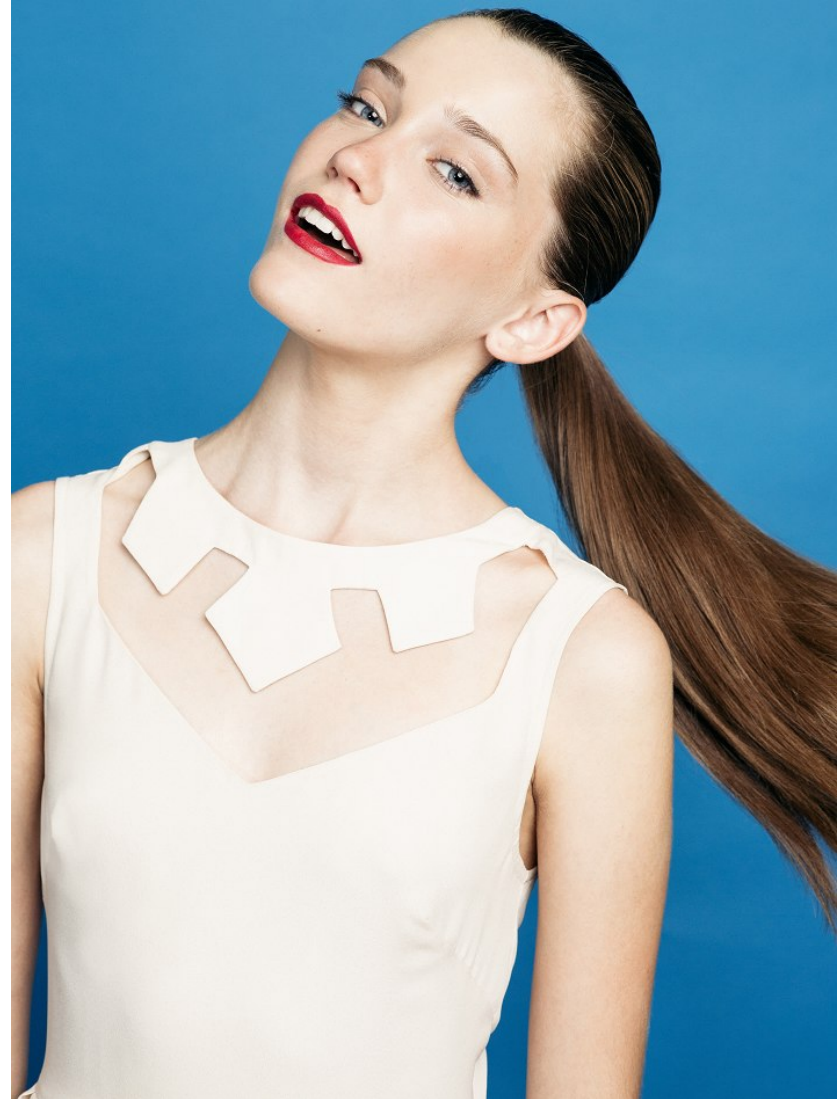




CHLOE BECHTOL

CHLOE BECHTOL

HEIGHT 5'9" BUST 34" WAIST 25" HIPS 34.5" SHOES 8.5 EYES BLUE HAIR BROWN





AMITH

NEO DESERT

Chloe Bechtol photographed by Megan Taylor.
Styling by Jordan Engel.
Hair and makeup by KC Witkamp.

Dress (Nasty Gal), leotard
(Nasty Gal), earrings (Brandy
Melville), and rings (Madelwell)

117 NORTH ROBERTSON BOULEVARD. LOS ANGELES CA 90048. PH: 310 385 6900 FX: 310 385 6910